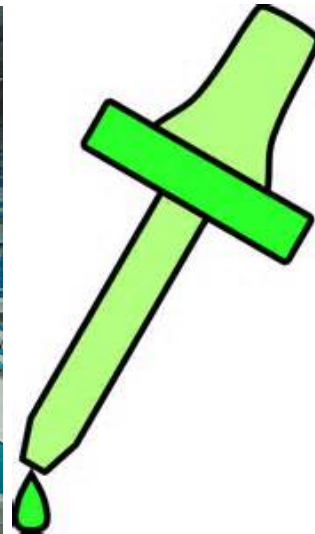


## Testing Results for Lead in Drinking Water for Naval Air Station Oceana, Dam Neck Annex – Child Development Center – Building 202

The Navy is committed to maintaining safe drinking water on its installations. City water supplied to the Navy and the Navy's water distribution system is regularly tested and in compliance with the Safe Drinking Water Act. Because lead exposure is a particular concern for children, and lead may be introduced to drinking water through the pipes, fittings, solder, and fixtures inside a building, the EPA recommends, but does not mandate, that we test the lead content of drinking water in priority areas such as youth centers (YC), child development centers (CDC), and child development group homes (CDGH).

Navy environmental personnel conducted lead testing at the NAS Oceana, Dam Neck Annex – CDC – Building 202 in accordance with Navy and EPA guidelines. Samples from various locations in the CDC were sent to a state-certified laboratory for analysis.

At the NAS Oceana, Dam Neck Annex – CDC – Building 202, outlets used for drinking and cooking, as well as outlets used for hand washing were tested. All 42 of the outlets tested were within EPA's recommended lead level of 20 ppb. One part per billion is equal to one drop of water in an Olympic-size swimming pool.



A copy of all test results is enclosed for your information. The test results are presented in two tables:

- Table 1 **Summary of Results** summarizes the data by category of use (e.g., drinking, cooking, washing).
- Table 2 **Summary Statistics** summarizes all the data.

**Table 1** provides a description of each sampling location using three columns; *Category*, *Outlet No.*, and *Outlet Description*. The *Category* column gives information about whether the outlet is used for drinking water (water fountain), cooking (food preparation), or washing (primarily hand-washing). The *Outlet No.* column is the number used to identify each outlet location and

corresponds to the outlet number on the floor plan. The *Outlet Description* column contains additional information to describe the outlet sampled under each category.

The next set of columns in **Table 1** provide *Initial Sampling Results*, and for those locations that exceeded the recommended level of 20 ppb, the *Re-sampling Results*.

EPA sampling protocol requires water to not be used for between 8 and 18 hours prior to first draw sampling. Therefore, the *Initial Sampling Results* include a sub-column for *First Draw* samples collected early in the morning before the CDC opened and before any water was used. Additional sub-columns indicate whether *Retesting* is required and the *Date Secured* for fixtures greater than 20 ppb.

The *Re-sampling Results* columns are annotated N/A since all samples at the NAS Oceana, Dam Neck Annex – CDC – Building 202 were within EPA recommended levels.

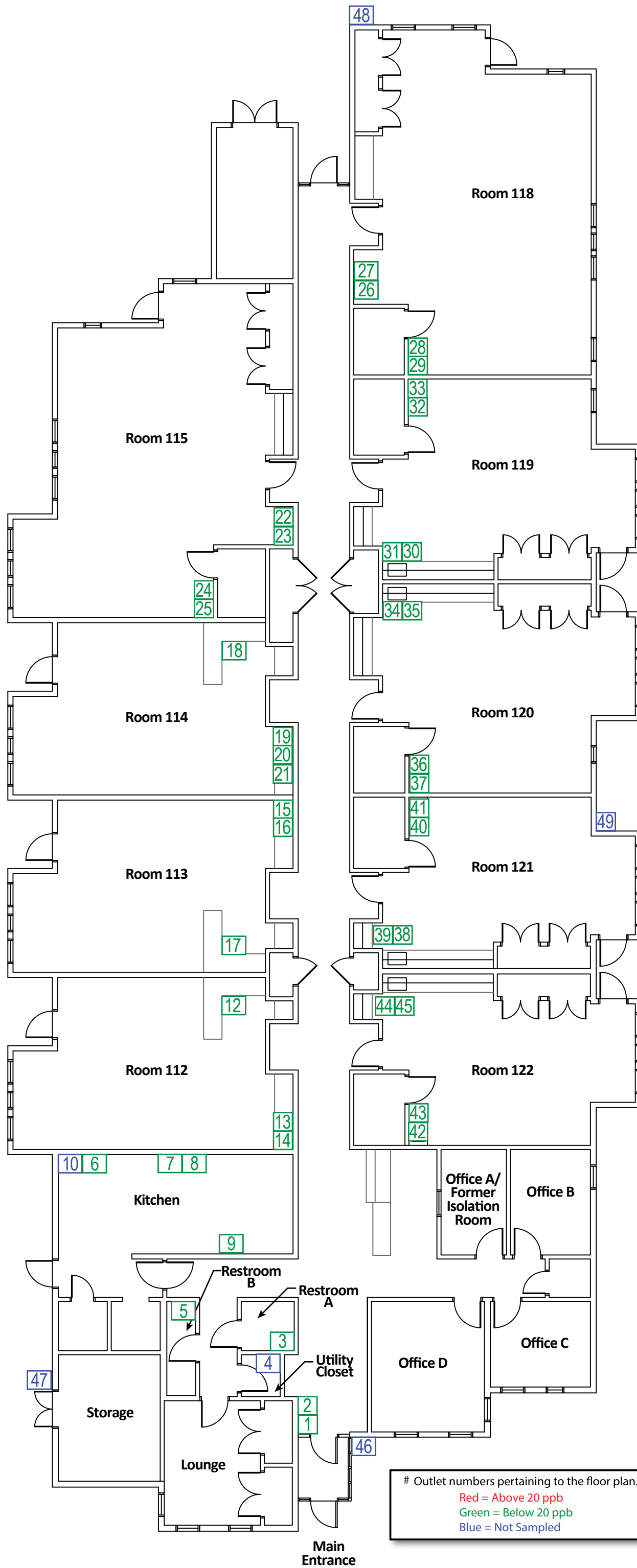
The *Corrective Actions* column describes actions that have been taken to remediate the source of lead. In the event that future fixtures or upstream piping is replaced, there are columns for *Post Remediation Sampling* data that will be documented to confirm that these corrective actions were successful in reducing lead below 20 ppb.

To learn more about lead in drinking water schools and day care centers visit this EPA website at: [http://water.epa.gov/drink/info/lead/schools\\_index.cfm](http://water.epa.gov/drink/info/lead/schools_index.cfm).

To learn more about your home's public water supplier, see their annual water quality report: Virginia Beach: <http://www.vbgov.com/government/departments/public-utilities/water-quality/Pages/default.aspx>

Navy Water Quality Reports:  
[http://www.cnic.navy.mil/regions/cnrma/om/environmental\\_support/water\\_quality\\_information.html](http://www.cnic.navy.mil/regions/cnrma/om/environmental_support/water_quality_information.html)

To answer any questions you may have on the sampling program contact the NAS Oceana Public Affairs Officer at 757-433-3155. If you have any health questions or concerns, we encourage you to call your health care provider or, if you are a TRICARE beneficiary, contact the Regional Nurse Advice Line (1-800-TRICARE, press option 1) or use the Regional Appointment Center at 1-866-645-4584 to schedule an appointment with your primary care provider.



# Outlet numbers pertaining to the floor plan.  
 Red = Above 20 ppb  
 Green = Below 20 ppb  
 Blue = Not Sampled



No.	Type of Fixture	Location Description	Sampled?	Exceeded?
1	Water fountain (cooler)	Hallway	Yes	No
2	Water fountain (cooler)	Hallway	Yes	No
3	High hand washing faucet	Restroom A	Yes	No
4	Utility sink – not for drinking	Utility Closet	No	N/A
5	High hand washing faucet	Restroom B	Yes	No
6	Kitchen sink A for dishwashing and food preparation	Kitchen	Yes	No
7	High hand washing faucet (with emergency eye wash station)	Kitchen	Yes	No
8	Kitchen sink B for dishwashing and food preparation	Kitchen	Yes	No
9	Combined ice maker and water dispenser (ice outlet)	Kitchen	Yes	No
10	Dishwashing sprayer – not for drinking	Kitchen	No	N/A
11	Low hand washing faucet – removed prior to sampling	Office A (Former Isolation Room)	No	N/A
12	High hand washing faucet	Room 112	Yes	No
13	Water fountain outlet from combination sink	Room 112	Yes	No
14	High hand washing outlet from combination sink	Room 112	Yes	No
15	Water fountain outlet from combination sink	Room 113	Yes	No
16	High hand washing outlet from combination sink	Room 113	Yes	No
17	High hand washing faucet	Room 113	Yes	No
18	High hand washing faucet A	Room 114	Yes	No
19	Low hand washing faucet for teeth brushing	Room 114	Yes	No
20	Water fountain outlet from combination sink	Room 114	Yes	No
21	High hand washing outlet from combination sink	Room 114	Yes	No
22	Low hand washing and teeth brushing outlet from combination sink	Room 115	Yes	No
23	Water fountain outlet from combination sink	Room 115	Yes	No
24	Low hand washing faucet	Room 115	Yes	No
25	High hand washing faucet	Room 115	Yes	No
26	Low hand washing and teeth brushing outlet from combination sink	Room 118	Yes	No
27	Water fountain outlet from combination sink	Room 118	Yes	No
28	Low hand washing faucet	Room 118	Yes	No
29	High hand washing faucet	Room 118	Yes	No
30	Low hand washing and teeth brushing outlet from combination sink	Room 119	Yes	No
31	Water fountain outlet from combination sink	Room 119	Yes	No
32	Low hand washing faucet	Room 119	Yes	No
33	High hand washing faucet	Room 119	Yes	No
34	Low hand washing and teeth brushing outlet from combination sink	Room 120	Yes	No
35	Water fountain outlet from combination sink	Room 120	Yes	No
36	Low hand washing faucet	Room 120	Yes	No
37	High hand washing faucet	Room 120	Yes	No
38	Low hand washing and teeth brushing outlet from combination sink	Room 121	Yes	No
39	Water fountain outlet from combination sink	Room 121	Yes	No
40	Low hand washing faucet	Room 121	Yes	No
41	High hand washing faucet	Room 121	Yes	No
42	High hand washing faucet	Room 122	Yes	No
43	Low hand washing faucet	Room 122	Yes	No
44	Low hand washing and teeth brushing outlet from combination sink	Room 122	Yes	No
45	Water fountain outlet from combination sink	Room 122	Yes	No
46	Hose outlet – not for drinking	Outside of Building 202	No	N/A
47	Hose outlet – not for drinking	Outside of Building 202	No	N/A
48	Hose outlet – not for drinking	Outside of Building 202	No	N/A
49	Hose outlet – not for drinking	Outside of Building 202	No	N/A

# Outlet numbers pertaining to the floor plan.

Red = Above 20 ppb  
Green = Below 20 ppb  
Blue = Not Sampled



Priority Areas Lead Testing and Corrective Actions (December 2014)  
NAS Oceana, Dam Neck Annex CDC, Building 202

SAMPLING LOCATION DESCRIPTION			INITIAL SAMPLING RESULTS		RE-SAMPLING RESULTS			CORRECTIVE ACTIONS	POST REMEDIATION SAMPLING RESULTS	
CATEGORY Water Intended For:	SAMPLE ID NO.	Outlet Description	First Draw (ppb)	Retest required?	Date Fixture Secured?	Recommended Level = 20ppb		Description	Recommended Level = 20ppb	
						Water Fountain 15 min. Follow up Flush Sample - Collected day before First Draw Sampling (ppb)	First Draw (ppb)		Follow up Flush - Collected 30 seconds after First Draw Sampling (ppb)	First Draw (ppb)
<b>SAMPLING DATE</b>			<b>12/16/2014</b>							
<b>RESULTS DATE</b>			<b>12/23/2014</b>							
WASHING	17	Room 113 high hand washing faucet	non-detect	NO	N/A	N/A	N/A	N/A	N/A	N/A
WASHING	18	Room 114 high hand washing faucet A	non-detect	NO	N/A	N/A	N/A	N/A	N/A	N/A
WASHING	21	Room 114 high hand washing outlet from combination sink	2	NO	N/A	N/A	N/A	N/A	N/A	N/A
WASHING	24	Room 115 low hand washing faucet	non-detect	NO	N/A	N/A	N/A	N/A	N/A	N/A
WASHING	25	Room 115 high hand washing faucet	non-detect	NO	N/A	N/A	N/A	N/A	N/A	N/A
WASHING	28	Room 118 low hand washing faucet	non-detect	NO	N/A	N/A	N/A	N/A	N/A	N/A
WASHING	29	Room 118 high hand washing faucet	non-detect	NO	N/A	N/A	N/A	N/A	N/A	N/A
WASHING	32	Room 119 low hand washing faucet	non-detect	NO	N/A	N/A	N/A	N/A	N/A	N/A
WASHING	33	Room 119 high hand washing faucet	non-detect	NO	N/A	N/A	N/A	N/A	N/A	N/A
WASHING	36	Room 120 low hand washing faucet	non-detect	NO	N/A	N/A	N/A	N/A	N/A	N/A
WASHING	37	Room 120 high hand washing faucet	non-detect	NO	N/A	N/A	N/A	N/A	N/A	N/A
WASHING	40	Room 121 low hand washing faucet	non-detect	NO	N/A	N/A	N/A	N/A	N/A	N/A
WASHING	41	Room 121 high hand washing faucet	2	NO	N/A	N/A	N/A	N/A	N/A	N/A
WASHING	42	Room 122 high hand washing faucet	non-detect	NO	N/A	N/A	N/A	N/A	N/A	N/A
WASHING	43	Room 122 low hand washing faucet	non-detect	NO	N/A	N/A	N/A	N/A	N/A	N/A

Notes:

Table 2. Summary Statistics

CATEGORY	INITIAL SAMPLING RESULTS		RE-SAMPLING RESULTS		POST REMEDIATION RESULTS
	First Draw	Water Fountain Follow up Flush Sample - Collected day before First Draw Sampling	First Draw (ppb)	Follow up Flush - Collected 30 seconds after First Draw Sampling	First Draw
Total Drinking	12	0	0	0	0
Total Drinking > 20 ppb	0	0	0	0	0
Total Cooking	2	0	0	0	0
Total Cooking > 20 ppb	0	0	0	0	0
Total Washing/Brushing	28	0	0	0	0
Total Washing/Brushing > 20 ppb	0	0	0	0	0
Total Samples	42	0	0	0	0
Total Samples > 20 ppb	0	0	0	0	0