

**Overview of Testing Results for Lead in Drinking Water
and Corrective Actions for
Naval Air Station Oceana Child Development Center (Building 450)**

The Navy is committed to maintaining safe drinking water on its installations. City water supplied to the Navy and the Navy's water distribution system is regularly tested and in compliance with the Safe Drinking Water Act. Because lead exposure is a particular concern for children, and lead may be added to drinking water through the pipes, fittings, solder, and fixtures inside a building, the Environmental Protection Agency (EPA) recommends, but does not mandate, that we test the lead content of drinking water in priority areas such as youth centers (YCs), child development group homes (CDGHs), and child development centers (CDCs). The Navy has adopted the recommendation as policy.

Navy environmental personnel conducted lead testing at the Naval Air Station (NAS) Oceana Child Development Center (CDC) Building 450, in accordance with Navy and EPA guidelines. Samples from various locations in the CDC Building 450 were sent to a state-certified laboratory for analysis.

At the CDC Building 450, outlets used for drinking, cooking, and washing were tested. Out of 103 samples collected, zero water outlets tested above the EPA-recommended screening level for lead in drinking water in schools and childcare centers of 15 parts per billion (ppb).

A copy of all test results is enclosed for your information. The test results are presented in two tables:

- Table 1 **Summary of Results** summarizes the data by category of use (e.g., drinking, cooking, washing).
- Table 2 **Summary Statistics** summarizes all the data.

A floor plan of the CDC Building 450 has also been included to show the locations of the fixtures.

Table 1 provides a description of each sampling location using three columns; *Category*, *Sampling ID*, and *Outlet Description*. The *Category* column gives information about whether the outlet is used for drinking water (water fountain), cooking (food preparation), or washing (primarily hand-washing or brushing teeth). The *Sample ID* column is the identification used to label each sample bottle. The *Outlet Description* column contains additional information to describe the outlet sampled under each category.

The next set of columns in **Table 1** provide *Initial Sampling Results*, and for those locations that exceeded the recommended screening level of 15 ppb the *Re-sampling Results*.

EPA sampling protocol requires water to not be used for between 8 and 18 hours prior to first draw sampling. Therefore, *Initial Sampling Results were from first draw samples collected early in the morning before the YC opened and before any water was used. The Initial Sampling*

Results also indicate whether resampling is required and the date that fixtures greater than 15 ppb were secured. None of the sampled outlets exceeded 15 ppb.

If exceedances were detected, the *Re-sampling Results* includes columns for *First Draw* and flushing samples which help determine the source of lead for sampled outlets that exceeded 15 ppb.

To learn more about lead in drinking water in schools and day care centers visit the following EPA website: <https://www.epa.gov/dwreginfo/lead-drinking-water-schools-and-child-care-facilities>.

To learn more about annual water quality at your home, see the annual water quality report at: https://www.cnic.navy.mil/regions/cnrma/om/environmental_support/water_quality_information.html

Another resource on drinking water taste, odor, and color can be found at: <https://www.epa.gov/dwstandardsregulations/secondary-drinking-water-standards-guidance-nuisance-chemicals>

To answer general questions you may have on the sampling program contact us at (757) 433-3155 or jennifer.hayes@navy.mil.

If you have any health questions or concerns, you are encouraged to contact your health care provider or, if you are a TRICARE beneficiary, use the Region Appointment Center to schedule an appointment with your primary care provider at 1-866-645-4584.

Enclosures:

1. Complete Test Results
2. Floor Plan of the SAC/YC

Priority Areas Lead Testing and Corrective Actions (July 2019)
 NAS Oceana, CDC, Building 450

Table 1. Summary of Results

| CATEGORY Water Intended For: | SAMPLE ID | SAMPLE ID NO. | SAMPLING LOCATION DESCRIPTION | INITIAL SAMPLING RESULTS | | | RE-SAMPLING RESULTS | | | CORRECTIVE ACTIONS | | POST REMEDIATION SAMPLING RESULTS | |
|---------------------------------|-----------------------|---------------|--|--------------------------|-----------------|-----------------------------------|--|------------------|--|--------------------|-------------------------------|--|--|
| | | | | First Draw (ppb) | Reset required? | Date Fixture Sealed? (See Note 1) | Water Fountain 15 min. Follow up Flush Sample - Collected day before First Draw Sampling (ppb) | First Draw (ppb) | Follow up Flush - Collected 30 seconds after First Draw Sampling (ppb) | Description | First Draw (ppb) (See note 2) | Follow up Flush - Collected 30 seconds after First Draw Sampling (ppb) | |
| DRINKING | OC-450-RM113-TCOMB-FD | 1 | Room 113 water fountain outlet from combination sink | 7/19/2019 non-detect | No | N/A | N/A | N/A | N/A | N/A | N/A | N/A | |
| DRINKING | OC-450-RM113-TCOMB-FD | 5 | Room 113 water fountain outlet from combination sink | 7/23/2019 2 | No | N/A | N/A | N/A | N/A | N/A | N/A | N/A | |
| DRINKING | OC-450-RM121-TCOMB-FD | 48 | Room 121 water fountain outlet from combination sink | non-detect | No | N/A | N/A | N/A | N/A | N/A | N/A | N/A | |
| DRINKING | OC-450-RM122-TCOMB-FD | 54 | Room 122 water fountain outlet from combination sink | non-detect | No | N/A | N/A | N/A | N/A | N/A | N/A | N/A | |
| DRINKING | OC-450-RM113-TCOMB-FD | 60 | Room 113 water fountain outlet from combination sink | non-detect | No | N/A | N/A | N/A | N/A | N/A | N/A | N/A | |
| DRINKING | OC-450-RM113-TCOMB-FD | 80 | Room 113 water fountain outlet from combination sink | non-detect | No | N/A | N/A | N/A | N/A | N/A | N/A | N/A | |
| DRINKING | OC-450-RM113-TCOMB-FD | 86 | Room 113 water fountain outlet from combination sink | non-detect | No | N/A | N/A | N/A | N/A | N/A | N/A | N/A | |
| DRINKING | OC-450-RM113-TCOMB-FD | 92 | Room 113 water fountain outlet from combination sink | non-detect | No | N/A | N/A | N/A | N/A | N/A | N/A | N/A | |
| DRINKING | OC-450-RM113-TCOMB-FD | 98 | Room 113 water fountain outlet from combination sink | non-detect | No | N/A | N/A | N/A | N/A | N/A | N/A | N/A | |
| DRINKING | OC-450-RM113-TCOMB-FD | 104 | Room 113 water fountain outlet from combination sink | non-detect | No | N/A | N/A | N/A | N/A | N/A | N/A | N/A | |
| DRINKING | OC-450-RM113-TCOMB-FD | 109 | Room 113 water fountain outlet from combination sink | non-detect | No | N/A | N/A | N/A | N/A | N/A | N/A | N/A | |
| DRINKING | OC-450-RM113-TCOMB-FD | 111 | Room 113 water fountain outlet from combination sink | non-detect | No | N/A | N/A | N/A | N/A | N/A | N/A | N/A | |
| COOKING | OC-450-RM112-EC-FD | 33 | Room 112 kitchen sink for dishwashing food prep | non-detect | No | N/A | N/A | N/A | N/A | N/A | N/A | N/A | |
| COOKING | OC-450-RM124-EC-FD | 66 | Room 124 kitchen sink for dishwashing food prep | non-detect | No | N/A | N/A | N/A | N/A | N/A | N/A | N/A | |
| COOKING | OC-450-RM124-EC-FD | 67 | Room 124 kitchen sink for dishwashing food prep | non-detect | No | N/A | N/A | N/A | N/A | N/A | N/A | N/A | |
| COOKING | OC-450-RM124-EC-FD | 68 | Room 124 kitchen sink for dishwashing food prep | non-detect | No | N/A | N/A | N/A | N/A | N/A | N/A | N/A | |
| COOKING | OC-450-RM124-EC-FD | 72 | Room 124 kitchen sink for dishwashing food prep | 12 | No | N/A | N/A | N/A | N/A | N/A | N/A | N/A | |
| COOKING | OC-450-RM124-EC-FD | 73 | Room 124 kitchen sink for dishwashing food prep | 3 | No | N/A | N/A | N/A | N/A | N/A | N/A | N/A | |
| COOKING | OC-450-RM135-TCOMB-FD | 31 | Room 135 high hand washing faucet for teeth brushing | non-detect | No | N/A | N/A | N/A | N/A | N/A | N/A | N/A | |
| BRUSHING/WASHING | OC-450-RM135-TCOMB-FD | 4 | Room 135 high hand washing faucet for teeth brushing | non-detect | No | N/A | N/A | N/A | N/A | N/A | N/A | N/A | |
| BRUSHING/WASHING | OC-450-RM135-TCOMB-FD | 5 | Room 135 high hand washing faucet for teeth brushing | non-detect | No | N/A | N/A | N/A | N/A | N/A | N/A | N/A | |
| BRUSHING/WASHING | OC-450-RM135-TCOMB-FD | 12 | Room 135 high hand washing faucet for teeth brushing | non-detect | No | N/A | N/A | N/A | N/A | N/A | N/A | N/A | |
| BRUSHING/WASHING | OC-450-RM135-TCOMB-FD | 15 | Room 135 high hand washing faucet for teeth brushing | non-detect | No | N/A | N/A | N/A | N/A | N/A | N/A | N/A | |
| BRUSHING/WASHING | OC-450-RM135-TCOMB-FD | 18 | Room 135 high hand washing faucet for teeth brushing | non-detect | No | N/A | N/A | N/A | N/A | N/A | N/A | N/A | |
| BRUSHING/WASHING | OC-450-RM135-TCOMB-FD | 47 | Room 135 high hand washing faucet for teeth brushing | non-detect | No | N/A | N/A | N/A | N/A | N/A | N/A | N/A | |
| BRUSHING/WASHING | OC-450-RM135-TCOMB-FD | 53 | Room 135 high hand washing faucet for teeth brushing | non-detect | No | N/A | N/A | N/A | N/A | N/A | N/A | N/A | |
| BRUSHING/WASHING | OC-450-RM135-TCOMB-FD | 59 | Room 135 high hand washing faucet for teeth brushing | non-detect | No | N/A | N/A | N/A | N/A | N/A | N/A | N/A | |
| BRUSHING/WASHING | OC-450-RM135-TCOMB-FD | 79 | Room 135 high hand washing faucet for teeth brushing | non-detect | No | N/A | N/A | N/A | N/A | N/A | N/A | N/A | |
| BRUSHING/WASHING | OC-450-RM135-TCOMB-FD | 85 | Room 135 high hand washing faucet for teeth brushing | non-detect | No | N/A | N/A | N/A | N/A | N/A | N/A | N/A | |
| BRUSHING/WASHING | OC-450-RM135-TCOMB-FD | 91 | Room 135 high hand washing faucet for teeth brushing | non-detect | No | N/A | N/A | N/A | N/A | N/A | N/A | N/A | |
| BRUSHING/WASHING | OC-450-RM135-TCOMB-FD | 97 | Room 135 high hand washing faucet for teeth brushing | non-detect | No | N/A | N/A | N/A | N/A | N/A | N/A | N/A | |
| BRUSHING/WASHING | OC-450-RM135-TCOMB-FD | 103 | Room 135 high hand washing faucet for teeth brushing | non-detect | No | N/A | N/A | N/A | N/A | N/A | N/A | N/A | |
| WASHING | OC-450-RM113-HHW-FD | 3 | Room 113 high hand washing faucet | non-detect | No | N/A | N/A | N/A | N/A | N/A | N/A | N/A | |
| WASHING | OC-450-RM113-HHW-FD | 6 | Room 113 high hand washing faucet | non-detect | No | N/A | N/A | N/A | N/A | N/A | N/A | N/A | |
| WASHING | OC-450-RM113-HHW-FD | 7 | Room 113 high hand washing faucet | non-detect | No | N/A | N/A | N/A | N/A | N/A | N/A | N/A | |
| WASHING | OC-450-RM113-HHW-FD | 8 | Room 113 high hand washing faucet | non-detect | No | N/A | N/A | N/A | N/A | N/A | N/A | N/A | |
| WASHING | OC-450-RM113-HHW-FD | 10 | Room 113 high hand washing faucet | non-detect | No | N/A | N/A | N/A | N/A | N/A | N/A | N/A | |
| WASHING | OC-450-RM113-HHW-FD | 11 | Room 113 high hand washing faucet | non-detect | No | N/A | N/A | N/A | N/A | N/A | N/A | N/A | |
| WASHING | OC-450-RM113-HHW-FD | 13 | Room 113 high hand washing faucet | non-detect | No | N/A | N/A | N/A | N/A | N/A | N/A | N/A | |
| WASHING | OC-450-RM113-HHW-FD | 14 | Room 113 high hand washing faucet | non-detect | No | N/A | N/A | N/A | N/A | N/A | N/A | N/A | |
| WASHING | OC-450-RM113-HHW-FD | 16 | Room 113 high hand washing faucet | non-detect | No | N/A | N/A | N/A | N/A | N/A | N/A | N/A | |
| WASHING | OC-450-RM113-HHW-FD | 17 | Room 113 high hand washing faucet | non-detect | No | N/A | N/A | N/A | N/A | N/A | N/A | N/A | |
| WASHING | OC-450-RM113-HHW-FD | 19 | Room 113 high hand washing faucet | non-detect | No | N/A | N/A | N/A | N/A | N/A | N/A | N/A | |
| WASHING | OC-450-RM113-HHW-FD | 20 | Room 113 high hand washing faucet | non-detect | No | N/A | N/A | N/A | N/A | N/A | N/A | N/A | |
| WASHING | OC-450-RM113-HHW-FD | 21 | Room 113 high hand washing faucet | non-detect | No | N/A | N/A | N/A | N/A | N/A | N/A | N/A | |
| WASHING | OC-450-RM113-HHW-FD | 22 | Room 113 high hand washing faucet | non-detect | No | N/A | N/A | N/A | N/A | N/A | N/A | N/A | |
| WASHING | OC-450-RM113-HHW-FD | 23 | Room 113 high hand washing faucet | non-detect | No | N/A | N/A | N/A | N/A | N/A | N/A | N/A | |
| WASHING | OC-450-RM113-HHW-FD | 24 | Room 113 high hand washing faucet | non-detect | No | N/A | N/A | N/A | N/A | N/A | N/A | N/A | |
| WASHING | OC-450-RM113-HHW-FD | 25 | Room 113 high hand washing faucet | non-detect | No | N/A | N/A | N/A | N/A | N/A | N/A | N/A | |

Priority Areas Lead Testing and Corrective Actions (July 2019)
 NAS Oceana, CDC, Building 450

| SAMPLING LOCATION DESCRIPTION | | INITIAL SAMPLING RESULTS | | | | RE-SAMPLING RESULTS | | | | CORRECTIVE ACTIONS | | POST REMEDIATION SAMPLING RESULTS | |
|-------------------------------|---------------------|--------------------------|---------------|--|------------------|----------------------------|-------------------------------------|---|------------------|--|-------------|-----------------------------------|--|
| CATEGORY | Water Intended For: | SAMPLE ID | SAMPLE ID NO. | Outlet Description | First Draw (ppb) | Retest required? | Date Fixture Searched? (See Note 3) | Water Fountain 15 min. Follow up Push Sample - Collected day before First Draw Sampling (ppb) | First Draw (ppb) | Follow up Flush - Collected 30 seconds after First Draw Sampling (ppb) | Description | First Draw (ppb) (See note 3) | Follow up Flush - Collected 30 seconds after First Draw Sampling (ppb) |
| | | SAMPLING DATE | | Recommended Level = 15 ppb | | Recommended Level = 15 ppb | | Recommended Level = 15 ppb | | Recommended Level = 15 ppb | | Recommended Level = 15 ppb | |
| WASHING | | DC-450-RM118-LPHW-FD | 36 | Room 118 low hand washing faucet with motion sensor | 1 | No | N/A | N/A | N/A | N/A | N/A | N/A | N/A |
| WASHING | | DC-450-RM117-HHWB-FD | 27 | Room 117 high hand washing faucet | non-detect | No | N/A | N/A | N/A | N/A | N/A | N/A | N/A |
| WASHING | | DC-450-RM117-LPHW-FD | 28 | Room 117 high hand washing faucet | non-detect | No | N/A | N/A | N/A | N/A | N/A | N/A | N/A |
| WASHING | | DC-450-RM116-LPHW-FD | 29 | Room 116 low hand washing faucet with motion sensor | 2 | No | N/A | N/A | N/A | N/A | N/A | N/A | N/A |
| WASHING | | DC-450-RM116-HHWB-FD | 30 | Room 116 high hand washing faucet | 3 | No | N/A | N/A | N/A | N/A | N/A | N/A | N/A |
| WASHING | | DC-450-RM116-LPHW-FD | 31 | Room 116 low hand washing faucet | 1 | No | N/A | N/A | N/A | N/A | N/A | N/A | N/A |
| WASHING | | DC-450-RM116-LPHW-FD | 32 | Room 116 low hand washing faucet | 9 | No | N/A | N/A | N/A | N/A | N/A | N/A | N/A |
| WASHING | | DC-450-RM115-HHWB-FD | 34 | Room 115 high hand washing faucet | non-detect | No | N/A | N/A | N/A | N/A | N/A | N/A | N/A |
| WASHING | | DC-450-RM115-LPHW-FD | 35 | Room 115 low hand washing faucet | non-detect | No | N/A | N/A | N/A | N/A | N/A | N/A | N/A |
| WASHING | | DC-450-RM115-LPHW-FD | 36 | Room 115 low hand washing faucet | 2 | No | N/A | N/A | N/A | N/A | N/A | N/A | N/A |
| WASHING | | DC-450-RM114-HHWB-FD | 37 | Room 114 high hand washing faucet | non-detect | No | N/A | N/A | N/A | N/A | N/A | N/A | N/A |
| WASHING | | DC-450-RM114-LPHW-FD | 38 | Room 114 low hand washing faucet | non-detect | No | N/A | N/A | N/A | N/A | N/A | N/A | N/A |
| WASHING | | DC-450-RM114-LPHW-FD | 39 | Room 114 low hand washing faucet with motion sensor | non-detect | No | N/A | N/A | N/A | N/A | N/A | N/A | N/A |
| WASHING | | DC-450-RM120-HHWB-FD | 40 | Room 120 high hand washing faucet | non-detect | No | N/A | N/A | N/A | N/A | N/A | N/A | N/A |
| WASHING | | DC-450-RM120-LPHW-FD | 41 | Room 120 low hand washing faucet | non-detect | No | N/A | N/A | N/A | N/A | N/A | N/A | N/A |
| WASHING | | DC-450-RM120-HHWB-FD | 42 | Room 120 high hand washing faucet with motion sensor | non-detect | No | N/A | N/A | N/A | N/A | N/A | N/A | N/A |
| WASHING | | DC-450-RM120-HHWB-FD | 43 | Room 120 high hand washing faucet with motion sensor | non-detect | No | N/A | N/A | N/A | N/A | N/A | N/A | N/A |
| WASHING | | DC-450-RM120-LPHW-FD | 44 | Room 120 low hand washing faucet | 3 | No | N/A | N/A | N/A | N/A | N/A | N/A | N/A |
| WASHING | | DC-450-RM120-LPHW-FD | 45 | Room 120 low hand washing faucet | 10 | No | N/A | N/A | N/A | N/A | N/A | N/A | N/A |
| WASHING | | DC-450-RM121-HHWB-FD | 46 | Room 121 high hand washing faucet | non-detect | No | N/A | N/A | N/A | N/A | N/A | N/A | N/A |
| WASHING | | DC-450-RM121-LPHW-FD | 49 | Room 121 low hand washing faucet | non-detect | No | N/A | N/A | N/A | N/A | N/A | N/A | N/A |
| WASHING | | DC-450-RM121-LPHW-FD | 50 | Room 121 low hand washing faucet | non-detect | No | N/A | N/A | N/A | N/A | N/A | N/A | N/A |
| WASHING | | DC-450-RM121-LPHW-FD | 51 | Room 121 low hand washing faucet | non-detect | No | N/A | N/A | N/A | N/A | N/A | N/A | N/A |
| WASHING | | DC-450-RM122-LPHW-FD | 52 | Room 122 high hand washing faucet | 3 | No | N/A | N/A | N/A | N/A | N/A | N/A | N/A |
| WASHING | | DC-450-RM122-HHWB-FD | 55 | Room 122 high hand washing faucet with motion sensor | non-detect | No | N/A | N/A | N/A | N/A | N/A | N/A | N/A |
| WASHING | | DC-450-RM122-HHWB-FD | 56 | Room 122 low hand washing faucet | non-detect | No | N/A | N/A | N/A | N/A | N/A | N/A | N/A |
| WASHING | | DC-450-RM123-LPHW-FD | 57 | Room 123 low hand washing faucet | non-detect | No | N/A | N/A | N/A | N/A | N/A | N/A | N/A |
| WASHING | | DC-450-RM123-HHWB-FD | 58 | Room 123 high hand washing faucet | non-detect | No | N/A | N/A | N/A | N/A | N/A | N/A | N/A |
| WASHING | | DC-450-RM123-HHWB-FD | 61 | Room 123 high hand washing faucet with motion sensor | non-detect | No | N/A | N/A | N/A | N/A | N/A | N/A | N/A |
| WASHING | | DC-450-RM123-LPHW-FD | 62 | Room 123 low hand washing faucet | non-detect | No | N/A | N/A | N/A | N/A | N/A | N/A | N/A |
| WASHING | | DC-450-RM123-LPHW-FD | 63 | Room 123 low hand washing faucet | non-detect | No | N/A | N/A | N/A | N/A | N/A | N/A | N/A |
| WASHING | | DC-450-BATH125-HHW-FD | 64 | Restroom 125 high hand washing faucet | non-detect | No | N/A | N/A | N/A | N/A | N/A | N/A | N/A |
| WASHING | | DC-450-R124-HHWB-FD | 68 | Room 124 high hand washing faucet with eye wash | non-detect | No | N/A | N/A | N/A | N/A | N/A | N/A | N/A |
| WASHING | | DC-450-R124-HHWB-FD | 74 | Room 124 high hand washing faucet with eye wash | non-detect | No | N/A | N/A | N/A | N/A | N/A | N/A | N/A |
| WASHING | | DC-450-RM130-HHWB-FD | 78 | Room 130 high hand washing faucet | non-detect | No | N/A | N/A | N/A | N/A | N/A | N/A | N/A |
| WASHING | | DC-450-RM130-LPHW-FD | 81 | Room 130 low hand washing faucet with motion sensor | non-detect | No | N/A | N/A | N/A | N/A | N/A | N/A | N/A |
| WASHING | | DC-450-RM130-LPHW-FD | 82 | Room 130 low hand washing faucet | non-detect | No | N/A | N/A | N/A | N/A | N/A | N/A | N/A |
| WASHING | | DC-450-RM130-LPHW-FD | 83 | Room 130 low hand washing faucet | non-detect | No | N/A | N/A | N/A | N/A | N/A | N/A | N/A |
| WASHING | | DC-450-RM131-HHWB-FD | 84 | Room 131 high hand washing faucet | non-detect | No | N/A | N/A | N/A | N/A | N/A | N/A | N/A |
| WASHING | | DC-450-RM131-LPHW-FD | 87 | Room 131 low hand washing faucet with motion sensor | non-detect | No | N/A | N/A | N/A | N/A | N/A | N/A | N/A |
| WASHING | | DC-450-RM131-LPHW-FD | 88 | Room 131 low hand washing faucet | non-detect | No | N/A | N/A | N/A | N/A | N/A | N/A | N/A |
| WASHING | | DC-450-RM133-LPHW-FD | 89 | Room 133 low hand washing faucet | 1 | No | N/A | N/A | N/A | N/A | N/A | N/A | N/A |
| WASHING | | DC-450-RM133-HHWB-FD | 90 | Room 133 high hand washing faucet | non-detect | No | N/A | N/A | N/A | N/A | N/A | N/A | N/A |
| WASHING | | DC-450-RM133-HHWB-FD | 93 | Room 133 high hand washing faucet with motion sensor | non-detect | No | N/A | N/A | N/A | N/A | N/A | N/A | N/A |
| WASHING | | DC-450-RM133-LPHW-FD | 94 | Room 133 low hand washing faucet | non-detect | No | N/A | N/A | N/A | N/A | N/A | N/A | N/A |
| WASHING | | DC-450-RM133-LPHW-FD | 95 | Room 133 low hand washing faucet | non-detect | No | N/A | N/A | N/A | N/A | N/A | N/A | N/A |
| WASHING | | DC-450-RM133-HHWB-FD | 96 | Room 133 high hand washing faucet | 1 | No | N/A | N/A | N/A | N/A | N/A | N/A | N/A |
| WASHING | | DC-450-RM133-HHWB-FD | 99 | Room 133 high hand washing faucet | non-detect | No | N/A | N/A | N/A | N/A | N/A | N/A | N/A |
| WASHING | | DC-450-RM133-LPHW-FD | 100 | Room 133 low hand washing faucet | non-detect | No | N/A | N/A | N/A | N/A | N/A | N/A | N/A |
| WASHING | | DC-450-RM133-LPHW-FD | 101 | Room 133 low hand washing faucet | non-detect | No | N/A | N/A | N/A | N/A | N/A | N/A | N/A |
| WASHING | | DC-450-RM134-HHWB-FD | 102 | Room 134 high hand washing faucet | non-detect | No | N/A | N/A | N/A | N/A | N/A | N/A | N/A |
| WASHING | | DC-450-RM134-LPHW-FD | 105 | Room 134 low hand washing faucet | 2 | No | N/A | N/A | N/A | N/A | N/A | N/A | N/A |
| WASHING | | DC-450-RM134-LPHW-FD | 106 | Room 134 low hand washing faucet | non-detect | No | N/A | N/A | N/A | N/A | N/A | N/A | N/A |

Priority Areas Lead Testing and Corrective Actions (July 2019)
 NAS Oceana, CDC, Building 450

| SAMPLING LOCATION DESCRIPTION | | INITIAL SAMPLING RESULTS Recommended Level = 15 ppb | | | RE-SAMPLING RESULTS Recommended Level = 15 ppb | | | CORRECTIVE ACTIONS | | POST REMEDIATION SAMPLING RESULTS Recommended Level = 15 ppb | |
|-------------------------------|-----------|--|----------------------------------|------------------|---|-----------------------------------|--|--------------------|--|---|--|
| CATEGORY | SAMPLE ID | SAMPLE ID NO. | Outlet Description | First Draw (ppb) | Retest required? | Date Fixture Seized? (See Note 1) | Water Fountain 15 min. Follow up Flush Sample - Collected day before First Draw Sampling (ppb) | First Draw (ppb) | Follow up Flush - Collected 30 seconds after First Draw Sampling (ppb) | First Draw (ppb) (See note 2) | Follow up Flush - Collected 30 seconds after First Draw Sampling (ppb) |
| Water Intended For: | | | | | | | | | | | |
| SAMPLING DATE | | | | 7/19/2019 | | | N/A | N/A | N/A | N/A | N/A |
| RESULTS DATE | | | | 7/23/2019 | | | N/A | N/A | N/A | N/A | N/A |
| WASHING | | 107 | Room 134 low hand washing faucet | non-detect | No | | N/A | N/A | N/A | N/A | N/A |

Table 2. Summary Statistics

| CATEGORY | INITIAL SAMPLING RESULTS | | RE-SAMPLING RESULTS | | POST REMEDIATION | |
|---------------------------------|--------------------------|--|---------------------|--|------------------|--|
| | First Draw | Water Fountain Follow up Flush Sample - Collected day before First Draw Sampling | First Draw (ppb) | Water Fountain Follow up Flush Sample - Collected 30 seconds after First Draw Sampling | First Draw | Follow up Flush - Collected 30 seconds after First Draw Sampling |
| Total Drinking | 11 | 0 | 0 | 0 | 0 | 0 |
| Total Drinking > 15 ppb | 6 | 0 | 0 | 0 | 0 | 0 |
| Total Cooking | 7 | 0 | 0 | 0 | 0 | 0 |
| Total Cooking > 15 ppb | 0 | 0 | 0 | 0 | 0 | 0 |
| Total Washing/Brushing | 04 | 0 | 0 | 0 | 0 | 0 |
| Total Washing/Brushing > 15 ppb | 0 | 0 | 0 | 0 | 0 | 0 |
| Total Samples | 103 | 0 | 0 | 0 | 0 | 0 |
| Total Samples > 15 ppb | 0 | 0 | 0 | 0 | 0 | 0 |

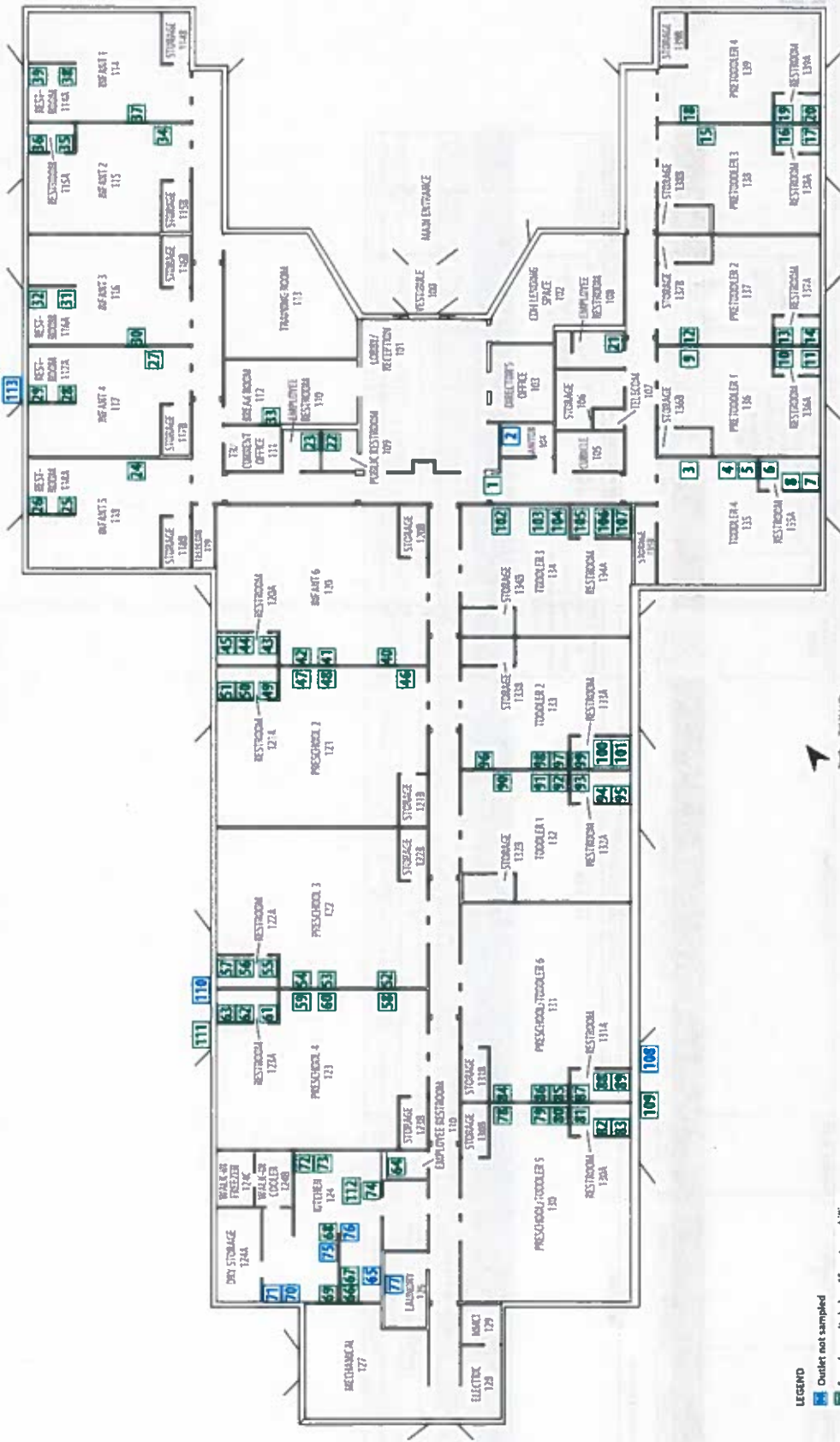


Figure 1.
Building 450 – Floor Plan
 NAS Oceana
 Virginia Beach, Virginia

ch2m:

Enclosure (2)

LEGEND
 [Blue Box] Outlet not sampled
 [Green Box] Sample results below 15 parts per billion

| No. | Type of Fixture | Location Description | Exceeded? |
|-----|--|----------------------|-------------|
| 1 | Water fountain (cooler) | Hallway | No |
| 2 | Utility sink – not for drinking | Janitor Room 104 | Not sampled |
| 3 | High hand washing faucet | Toddler Room 135 | No |
| 4 | Low hand washing and teeth brushing outlet from combination sink | Toddler Room 135 | No |
| 5 | Water fountain outlet from combination sink | Toddler Room 135 | No |
| 6 | High hand washing faucet with motion sensor | Toddler Room 135 | No |
| 7 | Low hand washing faucet with motion sensor | Toddler Room 135 | No |
| 8 | Low hand washing faucet with motion sensor | Toddler Room 135 | No |
| 9 | High hand washing faucet for teeth brushing | Pretoddler Room 136 | No |
| 10 | High hand washing faucet | Pretoddler Room 136 | No |
| 11 | Low hand washing faucet with motion sensor | Pretoddler Room 136 | No |
| 12 | High hand washing faucet for teeth brushing | Pretoddler Room 137 | No |
| 13 | High hand washing faucet with motion sensor | Pretoddler Room 137 | No |
| 14 | Low hand washing faucet | Pretoddler Room 137 | No |
| 15 | High hand washing faucet for teeth brushing | Pretoddler Room 138 | No |
| 16 | High hand washing faucet with motion sensor | Pretoddler Room 138 | No |
| 17 | Low hand washing faucet | Pretoddler Room 138 | No |
| 18 | High hand washing faucet for teeth brushing | Pretoddler Room 139 | No |
| 19 | High hand washing faucet | Pretoddler Room 139 | No |
| 20 | Low hand washing faucet | Pretoddler Room 139 | No |
| 21 | High hand washing faucet | Restroom 108 | No |
| 22 | High hand washing faucet | Restroom 109 | No |
| 23 | High hand washing faucet | Restroom 110 | No |
| 24 | High hand washing faucet | Infant Room 118 | No |
| 25 | High hand washing faucet | Infant Room 118 | No |
| 26 | Low hand washing faucet with motion sensor | Infant Room 118 | No |
| 27 | High hand washing faucet | Infant Room 117 | No |
| 28 | High hand washing faucet | Infant Room 117 | No |
| 29 | Low hand washing faucet with motion sensor | Infant Room 117 | No |
| 30 | High hand washing faucet | Infant Room 116 | No |
| 31 | High hand washing faucet | Infant Room 116 | No |
| 32 | Low hand washing faucet | Infant Room 116 | No |
| 33 | Kitchen sink for dishwashing, food | Staff Lounge 112 | No |
| 34 | High hand washing faucet | Infant Room 115 | No |
| 35 | High hand washing faucet | Infant Room 115 | No |
| 36 | Low hand washing faucet | Infant Room 115 | No |
| 37 | High hand washing faucet | Infant Room 114 | No |
| 38 | High hand washing faucet | Infant Room 114 | No |
| 39 | Low hand washing faucet with motion sensor | Infant Room 114 | No |
| 40 | High hand washing faucet | Infant Room 120 | No |
| 41 | Low hand washing faucet | Infant Room 120 | No |
| 42 | High hand washing faucet with motion sensor | Infant Room 120 | No |
| 43 | High hand washing faucet with motion sensor | Infant Room 120 | No |
| 44 | Low hand washing faucet | Infant Room 120 | No |
| 45 | Low hand washing faucet | Infant Room 120 | No |
| 46 | High hand washing faucet | Preschool Room 121 | No |

| No. | Type of Fixture | Location Description | Exceeded? |
|-----|--|----------------------------|-------------|
| 47 | Low hand washing and teeth brushing outlet from combination sink | Preschool Room 121 | No |
| 48 | Water fountain outlet from combination sink | Preschool Room 121 | No |
| 49 | High hand washing faucet | Preschool Room 121 | No |
| 50 | Low hand washing faucet | Preschool Room 121 | No |
| 51 | Low hand washing faucet | Preschool Room 121 | No |
| 52 | High hand washing faucet | Preschool Room 122 | No |
| 53 | Low hand washing and teeth brushing outlet from combination sink | Preschool Room 122 | No |
| 54 | Water fountain outlet from combination sink | Preschool Room 122 | No |
| 55 | High hand washing faucet with motion sensor | Preschool Room 122 | No |
| 56 | Low hand washing faucet | Preschool Room 122 | No |
| 57 | Low hand washing faucet | Preschool Room 122 | No |
| 58 | High hand washing faucet | Preschool Room 123 | No |
| 59 | Low hand washing and teeth brushing outlet from combination sink | Preschool Room 123 | No |
| 60 | Water fountain outlet from combination sink | Preschool Room 123 | No |
| 61 | High hand washing faucet with motion sensor | Preschool Room 123 | No |
| 62 | Low hand washing faucet | Preschool Room 123 | No |
| 63 | Low hand washing faucet | Preschool Room 123 | No |
| 64 | High hand washing faucet | Restroom 125 | No |
| 65 | Dishwasher sprayer – not for drinking | Kitchen 124 | Not sampled |
| 66 | Kitchen sink for dishwashing, food preparation | Kitchen 124 | No |
| 67 | Kitchen sink for dishwashing, food preparation | Kitchen 124 | No |
| 68 | High hand washing faucet | Kitchen 124 | No |
| 69 | Kitchen sink for dishwashing, food preparation | Kitchen 124 | No |
| 70 | Dishwasher sprayer – not for drinking | Kitchen 124 | Not sampled |
| 71 | Utility sink – not for drinking | Kitchen 124 | Not sampled |
| 72 | Kitchen sink for food preparation | Kitchen 124 | No |
| 73 | Sprayer for food preparation | Kitchen 124 | No |
| 74 | High hand washing faucet with eye wash attachment | Kitchen 124 | No |
| 75 | Ice maker | Kitchen 124 | Not sampled |
| 76 | Dishwasher sprayer – not for drinking | Kitchen 124 | Not sampled |
| 77 | Utility sink – not for drinking | Laundry Room 126 | Not sampled |
| 78 | High hand washing faucet | Preschool/Toddler Room 130 | No |
| 79 | Low hand washing and teeth brushing outlet from combination sink | Preschool/Toddler Room 130 | No |
| 80 | Water fountain outlet from combination sink | Preschool/Toddler Room 130 | No |
| 81 | High hand washing faucet with motion sensor | Preschool/Toddler Room 130 | No |
| 82 | Low hand washing faucet | Preschool/Toddler Room 130 | No |
| 83 | Low hand washing faucet | Preschool/Toddler Room 130 | No |
| 84 | High hand washing faucet | Preschool/Toddler Room 131 | No |
| 85 | Low hand washing and teeth brushing outlet from combination sink | Preschool/Toddler Room 131 | No |
| 86 | Water fountain outlet from combination sink | Preschool/Toddler Room 131 | No |
| 87 | High hand washing faucet with motion sensor | Preschool/Toddler Room 131 | No |
| 88 | Low hand washing faucet | Preschool/Toddler Room 131 | No |
| 89 | Low hand washing faucet with motion sensor | Preschool/Toddler Room 131 | No |
| 90 | High hand washing faucet | Toddler Room 132 | No |
| 91 | Low hand washing and teeth brushing outlet from combination sink | Toddler Room 132 | No |

| No. | Type of Fixture | Location Description | Exceeded? |
|-----|--|----------------------|-------------|
| 92 | Water fountain outlet from combination sink | Toddler Room 132 | No |
| 93 | High hand washing faucet with motion sensor | Toddler Room 132 | No |
| 94 | Low hand washing faucet | Toddler Room 132 | No |
| 95 | Low hand washing faucet with motion sensor | Toddler Room 132 | No |
| 96 | High hand washing faucet | Toddler Room 133 | No |
| 97 | Low hand washing and teeth brushing outlet from combination sink | Toddler Room 133 | No |
| 98 | Water fountain outlet from combination sink | Toddler Room 133 | No |
| 99 | High hand washing faucet | Toddler Room 133 | No |
| 100 | Low hand washing faucet | Toddler Room 133 | No |
| 101 | Low hand washing faucet | Toddler Room 133 | No |
| 102 | High hand washing faucet | Toddler Room 134 | No |
| 103 | Low hand washing and teeth brushing outlet from combination sink | Toddler Room 134 | No |
| 104 | Water fountain outlet from combination sink | Toddler Room 134 | No |
| 105 | High hand washing faucet | Toddler Room 134 | No |
| 106 | Low hand washing faucet | Toddler Room 134 | No |
| 107 | Low hand washing faucet | Toddler Room 134 | No |
| 108 | Hose outlet – not for drinking | Outside | Not sampled |
| 109 | Water fountain (bubbler) | Outside | No |
| 110 | Hose outlet – not for drinking | Outside | Not sampled |
| 111 | Water fountain (bubbler) | Outside | No |
| 112 | Kitchen sink for dishwashing, food preparation | Kitchen 124 | No |
| 113 | Water fountain (bubbler)-offline and not in use | Outside | Not sampled |

