

**Overview of Testing Results for Lead in Drinking Water
and Corrective Actions for
Naval Air Station Oceana Midway Manor Youth Center (Building 4200)**

The Navy is committed to maintaining safe drinking water on its installations. City water supplied to the Navy and the Navy's water distribution system is regularly tested and in compliance with the Safe Drinking Water Act. Because lead exposure is a particular concern for children, and lead may be added to drinking water through the pipes, fittings, solder, and fixtures inside a building, the Environmental Protection Agency (EPA) recommends, but does not mandate, that we test the lead content of drinking water in priority areas such as youth centers (YCs), child development group homes (CDGHs), and child development centers (CDCs). The Navy has adopted the recommendation as policy.

Navy environmental personnel conducted lead testing at the Naval Air Station (NAS) Oceana Midway Manor Youth Center (YC), 4200 Yorktown Boulevard, in accordance with Navy and EPA guidelines. Samples from various locations in the YC were sent to a state-certified laboratory for analysis.

At the Midway Manor YC, outlets used for drinking, cooking, and washing were tested. Out of 8 samples collected, zero water outlets initially tested above the EPA-recommended screening level for lead in drinking water in schools and childcare centers of 15 parts per billion (ppb).

A copy of all test results is enclosed for your information. The test results are presented in two tables:

- Table 1 **Summary of Results** summarizes the data by category of use (e.g., drinking, cooking, washing).
- Table 2 **Summary Statistics** summarizes all the data.

A floor plan of the Midway Manor YC has also been included to show the locations of the fixtures.

Table 1 provides a description of each sampling location using three columns; *Category*, *Sampling ID*, and *Outlet Description*. The *Category* column gives information about whether the outlet is used for drinking water (water fountain), cooking (food preparation), or washing (primarily hand-washing or brushing teeth). The *Sample ID* column is the identification used to label each sample bottle. The *Outlet Description* column contains additional information to describe the outlet sampled under each category.

The next set of columns in **Table 1** provide *Initial Sampling Results*, and for those locations that exceeded the recommended screening level of 15 ppb the *Re-sampling Results*.

EPA sampling protocol requires water to not be used for between 8 and 18 hours prior to first draw sampling. Therefore, *Initial Sampling Results* were from first draw samples collected early in the morning before the CDC opened and before any water was used. The *Initial Sampling*

Results also indicate whether resampling is required and the date that fixtures greater than 15 ppb were secured. None of the sampled outlets exceeded 15 ppb.

The *Re-sampling Results* includes columns for *First Draw* and flushing samples which help determine the source of lead for sampled outlets that exceeded 15 ppb.

To learn more about lead in drinking water in schools and day care centers visit the following EPA website: <https://www.epa.gov/dwreginfo/lead-drinking-water-schools-and-child-care-facilities>.

To learn more about annual water quality at your home, see the annual water quality report at: https://www.cnic.navy.mil/regions/cnrma/om/environmental_support/water_quality_information.html

Another resource on drinking water taste, odor, and color can be found at: <https://www.epa.gov/dwstandardsregulations/secondary-drinking-water-standards-guidance- nuisance-chemicals>

To answer general questions you may have on the sampling program contact us at (757) 433-3155 or jennifer.hayes@navy.mil.

If you have any health questions or concerns, you are encouraged to contact your health care provider or, if you are a TRICARE beneficiary, use the Region Appointment Center to schedule an appointment with your primary care provider at 1-866-645-4584.

Enclosures:

1. Complete Test Results
2. Floor Plan of the YC

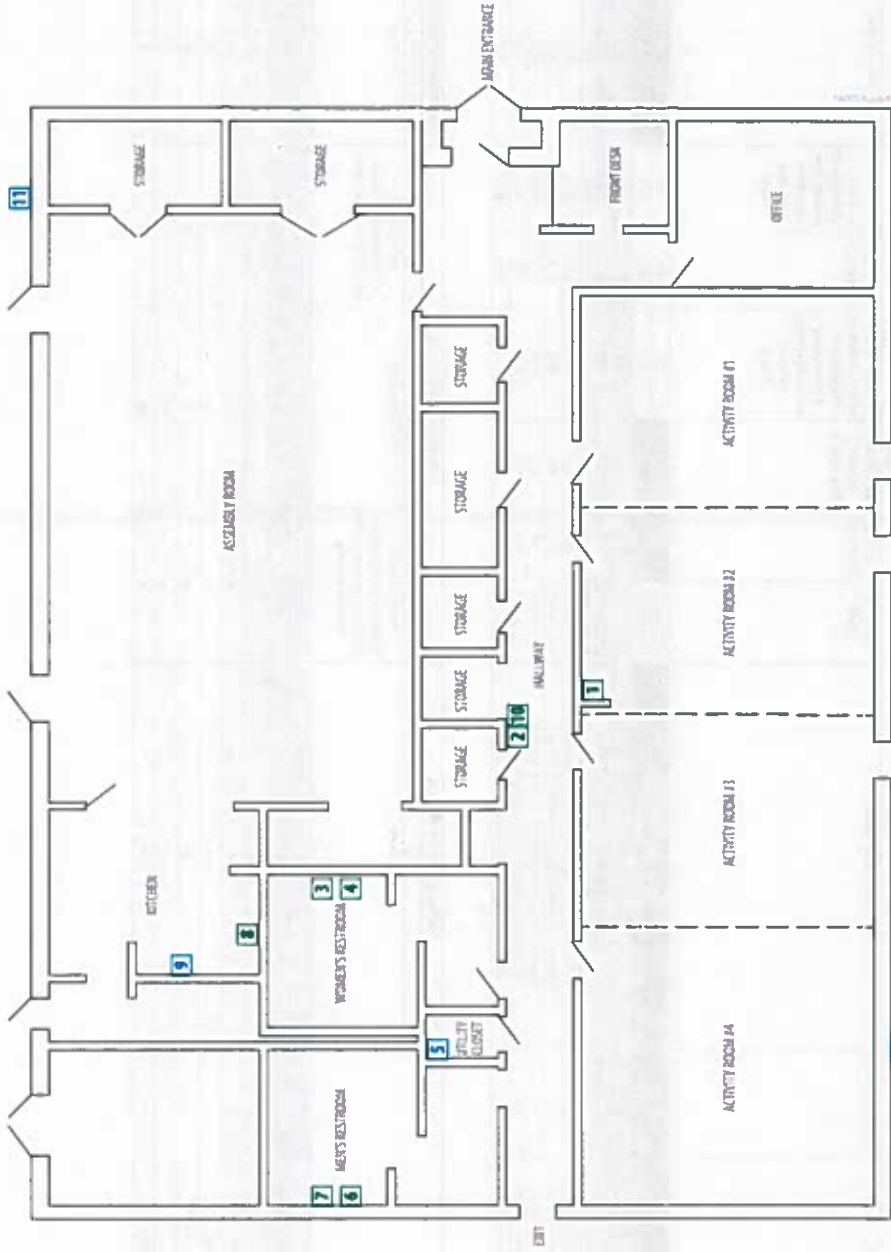
Priority Areas Lead Testing and Corrective Actions (June 2019)
 NAS Oceana, Midway Manor, SAC/Youth Center, 4200 Yorktown Boulevard

Table 1. Summary of Results

CATEGORY Water Intended For	SAMPLING LOCATION DESCRIPTION		INITIAL SAMPLING RESULTS		RE-SAMPLING RESULTS		CORRECTIVE ACTIONS		POST REMEDIATION SAMPLING RESULTS	
	SAMPLE ID	SAMPLE ID NO.	Drinet Description	Retest required? (See Note 1)	Date Fixture Secured? (See Note 1)	Water Fountain 15 min. Follow up Flush Sample - Collected day before First Draw Sampling (ppb)	First Draw (ppb)	Follow up Flush - Collected 30 seconds after First Draw Sampling (ppb)	First Draw (ppb) (See note 2)	Recommended Level = 15 ppb Follow up Flush - Collected 30 seconds after First Draw Sampling (ppb)
SEWER/DATE RESULTS DATE										
DRINKING	DC-4200-BATH-HHWB-FD	7	Highway water fountain (outside)	No	6/21/2019	TBD	TBD	TBD	TBD	
DRINKING	DC-4200-KITCH-FD	10	Boiler water after boiler water tap in kitchen sink for dish washing and food preparation	No	7/1/2019	TBD	TBD	TBD	TBD	
COOKING	DC-4200-K-K-FD	8		No		N/A	N/A	N/A	N/A	
WASHING	DC-4200-BATH-HHWB-FD	1	Activity Room 2 high hand washing faucet	No		N/A	N/A	N/A	N/A	
WASHING	DC-4200-BATH-HHWB-FD	3	Women's Restroom high hand washing faucet A	No		N/A	N/A	N/A	N/A	
WASHING	DC-4200-BATH-HHWB-FD	4	Women's Restroom high hand washing faucet B	No		N/A	N/A	N/A	N/A	
WASHING	DC-4200-BATH-HHWB-FD	5	Men's Restroom high hand washing faucet A	No		N/A	N/A	N/A	N/A	
WASHING	DC-4200-BATH-HHWB-FD	7	Men's Restroom high hand washing faucet B	No		N/A	N/A	N/A	N/A	

Table 2. Summary Statistics

CATEGORY	INITIAL SAMPLING RESULTS		RE-SAMPLING RESULTS		POST REMEDIATION RESULTS	
	First Draw	Water Fountain Follow up Flush Sample - Collected day before First Draw Sampling	First Draw (ppb)	Water Fountain Follow up Flush Sample - Collected 30 seconds after First Draw Sampling	First Draw	Follow up Flush - Collected 30 seconds after First Draw Sampling
Total Cooling	2	0	0	0	0	0
Total Cooling > 15 ppb	0	0	0	0	0	0
Total Cooling/Brushing	1	0	0	0	0	0
Total Cooling/Brushing > 15 ppb	0	0	0	0	0	0
Total Samples	8	0	0	0	0	0
Total Samples > 15 ppb	0	0	0	0	0	0



LEGEND

- 1 Outlet not sampled
- 2 Sample results below 15 parts per billion



Building 4200 - Floor Plan
 NAS Oceana Midway Manor
 Virginia Beach, Virginia



Enclosure (2)

No.	Type of Fixture	Location Description	Exceeded?
1	High hand washing faucet	Activity Room 2	
2	Water fountain (cooler)	Hallway	
3	High hand washing faucet	Women's Restroom	
4	High hand washing faucet	Women's Restroom	
5	Utility sink	Utility Closet	Not sampled
6	High hand washing faucet	Men's Restroom	
7	High hand washing faucet	Men's Restroom	
8	Kitchen sink for dishwashing and food preparation	Kitchen	
9	Ice maker	Kitchen	Not sampled
10	Water bottle spigot on water fountain	Hallway	
11	Hose bib	Outside, southwest side of Building 4200	Not sampled
12	Hose bib	Outside, northeast side of Building 4200	Not sampled

