



# Naval Station Norfolk Chambers Field *Tree Assessment*

November 2018

## Introduction

Naval Station Norfolk is preparing to conduct an assessment in the neighborhoods of Granby Shores, Commodore Park and Merrimack Landing (Figure 1) to determine if any trees pose a safety risk for aircraft using Runway 28 on Chambers Field. Obstructions such as trees, pose a safety concern if they grow tall enough to extend into the airspace used by aircraft during take-off and landing. Height restrictions for trees and other obstructions are established using the glide slope, which is the angle an aircraft can safely approach an airfield. An aerial survey has identified trees within Granby Shores, Commodore Park, Merrimack Landing, Navy property and 1 tree in Northside which may extend into the glideslope for aircraft approaching Runway 28. The Navy now needs to conduct a survey on the ground to verify the height, species and specific locations of these trees.



## Airfield Operations

Chambers Field is a primary hub for transporting personnel and cargo for the Department of Defense (DOD). The airfield is one of DOD's primary terminals for transporting personnel overseas and is home for a variety of aircraft including various helicopters and turboprop planes. It also hosts both military and commercial aircraft capable of transporting very large and heavy cargo needed to support our military's mission world-wide.

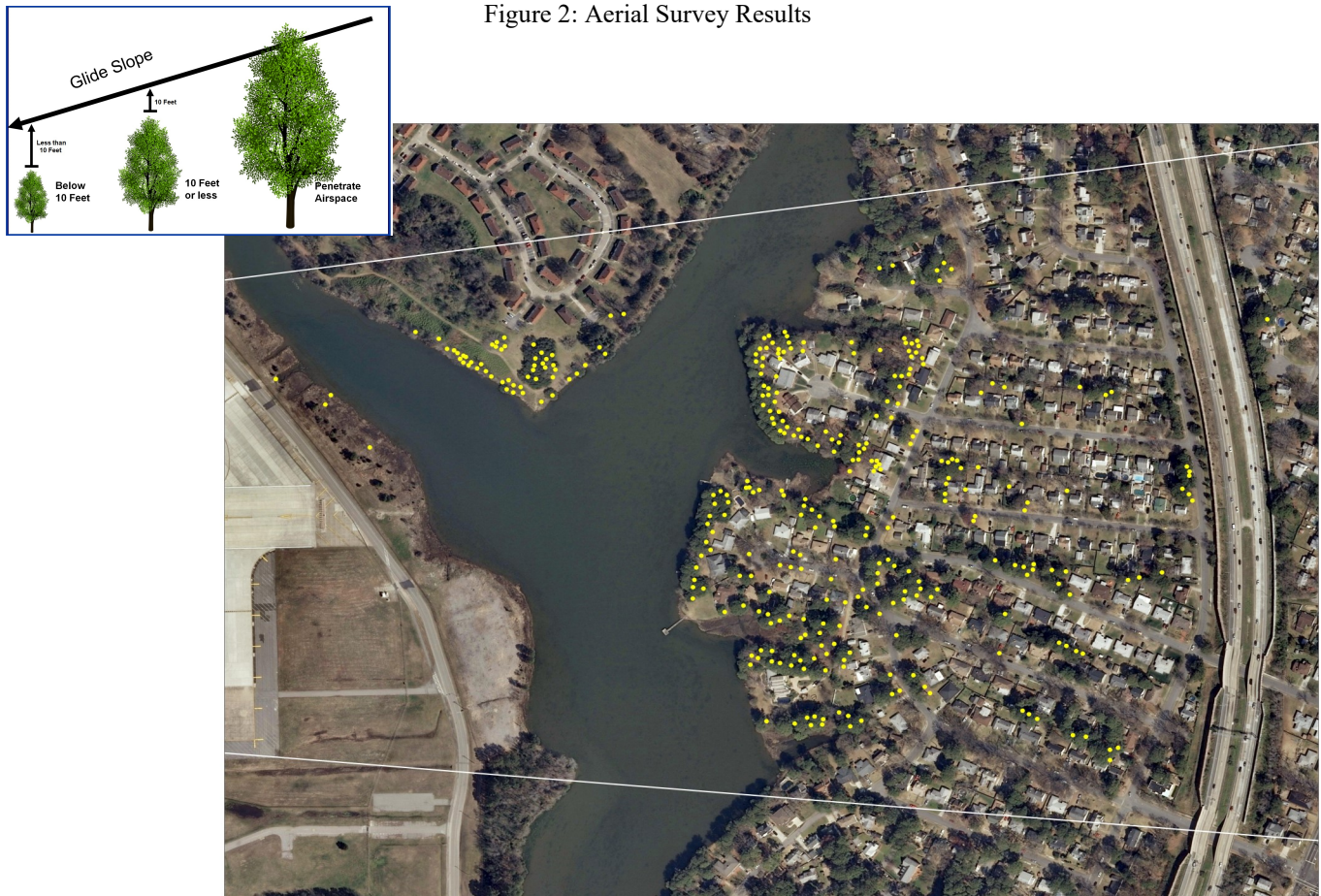
Safety inspections are conducted annually at Chambers Field to meet U.S. Federal Aviation Authority regulations and DOD policies. These inspections include identifying obstacles that potentially penetrate the glide slopes for each runway. The Navy has taken actions in previous years to remove trees and other obstructions on Navy property.



At this time, the Navy continues to make adjustments and tree removals on Navy property however, additional actions may now be needed on private property to address trees which have grown into the glide slope area.



Figure 2: Aerial Survey Results



### Aerial Survey

A survey using aerial photography has been completed and was used to map trees in the neighborhoods of Granby Shores, Commodore Park, Merrimack Landing, Navy property and 1 tree in Northside that are potential glide slope obstructions. The results are shown above on Figure 2.

### Next Steps

The Navy now needs to physically verify the height, species and location of the yellow identified trees through a ground survey. Some of the trees may be verified from the public right of way, but others will require access to private property. The Navy is asking residents whose property contains one or more of the identified trees to attend the November 8, 2018 open house public meeting to understand the proposed ground survey and potential request to access private property. Once the ground survey is complete, the Navy will meet again with residents at another public meeting to discuss the results and any actions needed to address trees confirmed as safety risks.

### Open House Details

The Navy is hosting an Open House public meeting on November 8, 2018 at Northside Middle School. The meeting format will include multiple information displays manned by Navy representatives to provide more information on the project, answer questions, and receive property access agreements. Residents are encouraged to attend the open house at their convenience between 4 p.m. and 7 p.m.

Please contact **Steve Jones, the Naval Station Norfolk Community Plans and Liaison Officer**, at (757) 322-2333 or email at [steve.g.jones@navy.mil](mailto:steve.g.jones@navy.mil) if you have questions or are unable to attend the open house on November 8, 2018.

If you have specific property access agreement questions, please contact **Betsy Sopko, Navy Real Estate Specialist**, at (757) 341-1544 or email at [Elizabeth.Sopko@navy.mil](mailto:Elizabeth.Sopko@navy.mil).